





# The St David

Irresistibly laid back living awaits. Matt black features pepper the interior for an effortlessly contemporary feel. Earthy tones and natural textures provide an inviting ambience and snug sanctuary for late-night laughter and storytelling. Light the fire, pour yourself something delicious and sink into this holiday home's mystique.



*Holidaying with style and sophistication*

Please note: Some items featured in this photography are scene-setting props or optional extras, not included in your purchase. Please speak to your park or dealership or refer to the 'all this included' section for this holiday home.





Shows optional full front sliding door, see page 35

## Highlights:

- Updated colour scheme for 2025
- Spacious family home
- All models include en suite toilet
- En suite with shower in the 38ft x 12ft 2 bedroom model
- Home-from-home styling
- Natural contemporary feature slatted wall panelling to fireplace



Shows optional full front sliding door, see page 35

# The St David

Take your pick of three irresistible layouts and enjoy a holiday home with style and sophistication built in.



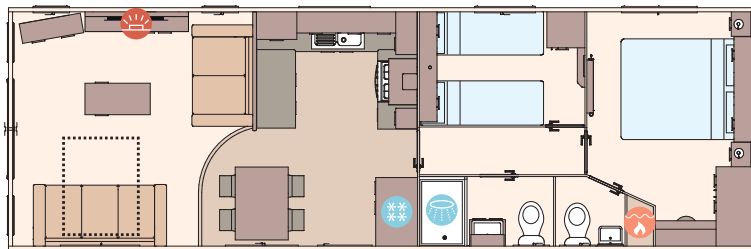
For more information and to take a virtual tour, visit [www.abiuk.co.uk](http://www.abiuk.co.uk)

## All this included

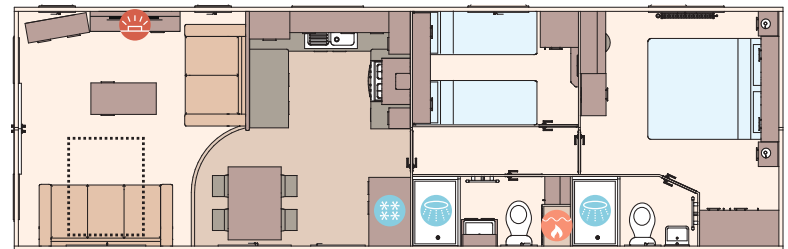
- ✓ Matt finish Champagne aluminium cladding
- ✓ Carpet underlay throughout
- ✓ Stylish light fittings with low energy bulbs
- ✓ Electric fire
- ✓ USB socket in lounge
- ✓ Additional sockets next to TV point in lounge
- ✓ Free-standing dining table and chairs
- ✓ Externally vented powered cooker hood
- ✓ 40mm worktops
- ✓ Soft-close hinges on doors and drawers in kitchen
- ✓ Lift-up bed in master bedroom
- ✓ King size bed in master bedroom (2 bedroom models only)
- ✓ TV point in master bedroom and one twin room
- ✓ USB sockets in all bedrooms
- ✓ En suite shower (38ft x 12ft 2 bedroom model only)
- ✓ Bathroom extractor fans
- ✓ Separate en suite toilet
- ✓ Hooks in all bathrooms
- ✓ Composite kitchen sink
- ✓ Coffee table with cube stool
- ✓ Crib 5 mattresses to all bedrooms

## Add any of these

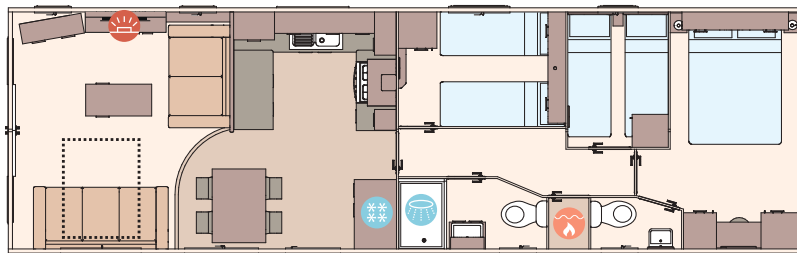
- Fully galvanised chassis
- 'Low E' PVCu Thermaglass double glazing
- Winter premium pack
- Winter electric pack
- Voiles throughout
- Free-standing fridge
- Free-standing or integrated fridge freezer
- Integrated microwave oven
- Integrated dishwasher or washing machine
- Plain duvet covers and pillowcases
- Scatter cushions in lounge
- Exterior door options available
- Bluetooth sound system in lounge
- 'Exclusive' pocket sprung mattresses
- Space saver bed (twin room only)



The St David 37ft x 12ft x 2 bedroom



The St David 38ft x 12ft x 2 bedroom



The St David 39ft x 12ft x 3 bedroom

### KEY:

- Fire
- Water heater
- Shower
- Fridge/Freezer
- Front pull out bed

OPTIONAL  
WINTER  
PACKS  
See Page 86